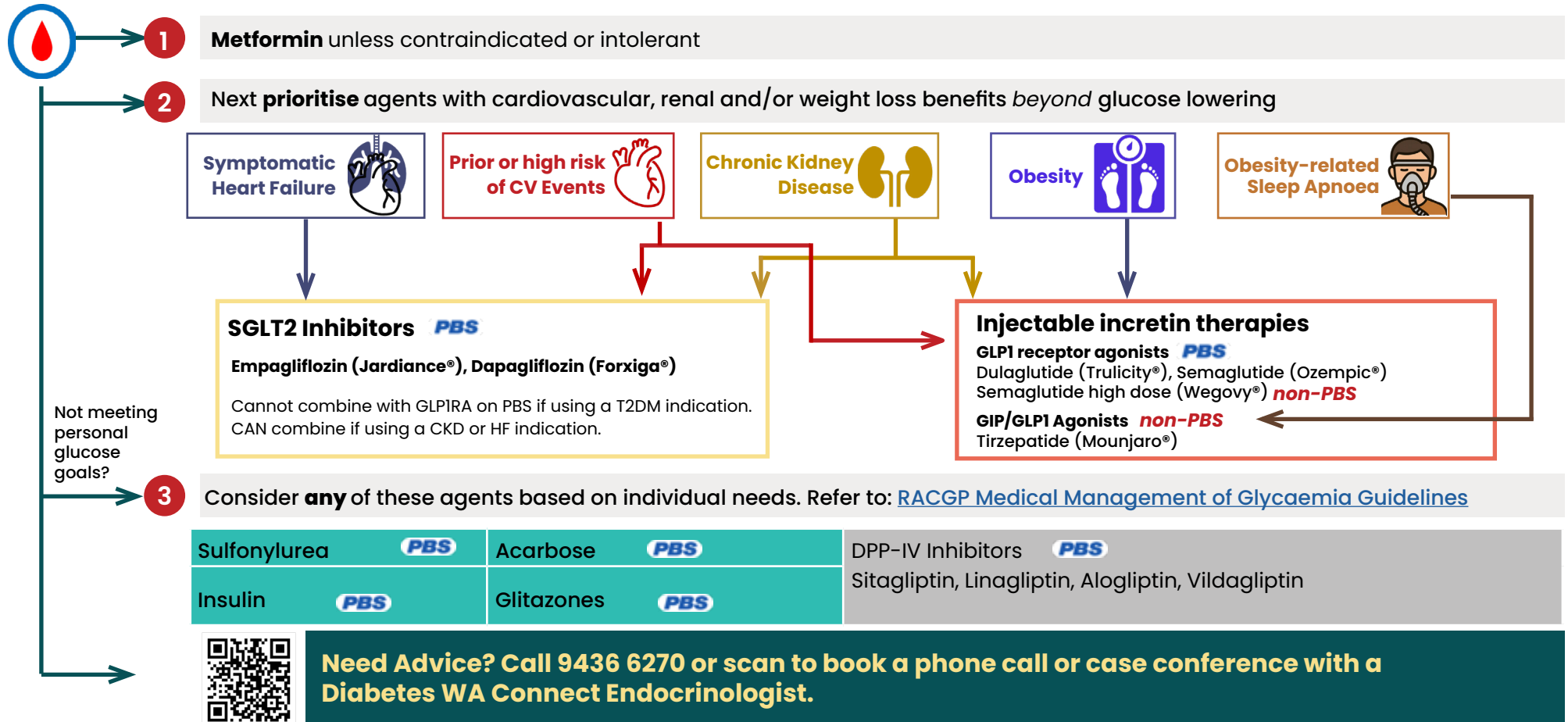


Treatment selection for Type 2 diabetes

Glucose Lowering Agents



PBS INFORMATION: Check full PBS criteria (www.pbs.gov.au), which are subject to change

PBS authority information correct as at 1 April 2026.

SGLT2 inhibitor	GLPIRA	DPP-IV inhibitor
<p>T2DM – 15311 inadequate response to met/SU/insulin</p> <p>T2DM – 16220 high CV risk OR indigenous</p> <p>CKD* – 17557 eGFR 45-90 AND ACR>22.6 or eGFR 20-45 and any ACR</p> <p>HFrEF* – 15047</p> <p>HFpEF* – 14471</p> <p><i>*Can combine with GLP1 on PBS if prescribed using these non T2DM codes.</i></p>	<p>Initial Phone/Online - inadequate response to met/SU/insulin AND SGLT2i</p> <p>Ongoing - streamlined 15263</p>	<p>T2DM – 15261 inadequate response to met/SU/insulin.</p> <p>Cannot combine with GLPIRA</p>